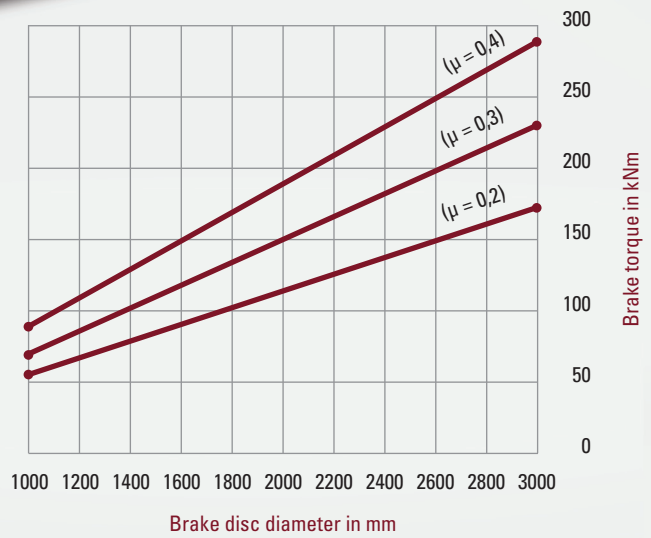


Rotor Brake (active)
Hydraulic Caliper Disc Brakes BACW 100



PINTSCH BUBENZER
 is certified according to
 DIN EN ISO 9001:2015



Reliable



High Performance



Robust Design



Easy Maintenance

Rotor Brake (active)

Description BACW 100



Main Features

■	Brake <u>hydraulic</u> applied
■	No failsafe function!
■	Organic, non-asbestos linings
■	Airgap between brake pad and disc up to 2 mm per side

Options

■	Sintered linings
■	Complete piped supports for one or more calipers
■	Hydraulic power units
■	Brake discs
■	Temperature sensor

Applications

■	Rotor Brake Systems with organic lining material for low speed applications
■	Rotor Brake Systems with sintered lining material for high speed applications

Operating Restrictions

■	Brakes of this range are tested both mechanically and hydraulically. Operating conditions other than described in this brochure require the manufacturer's approval and may influence the function of the caliper and its components
---	--



Please Note

We supply a detailed operating manual with every order. Nevertheless, we would point out that brakes are only as safe as the servicing and maintenance performed while they are in operation. The guarantee for the correct functioning of our brakes is therefore only valid if the user adheres to the German DIN standard 15434 part 2 (drum and disc brakes, servicing and maintenance in operation), or to comparable standards in his own country.



PINTSCH BUBENZER Service

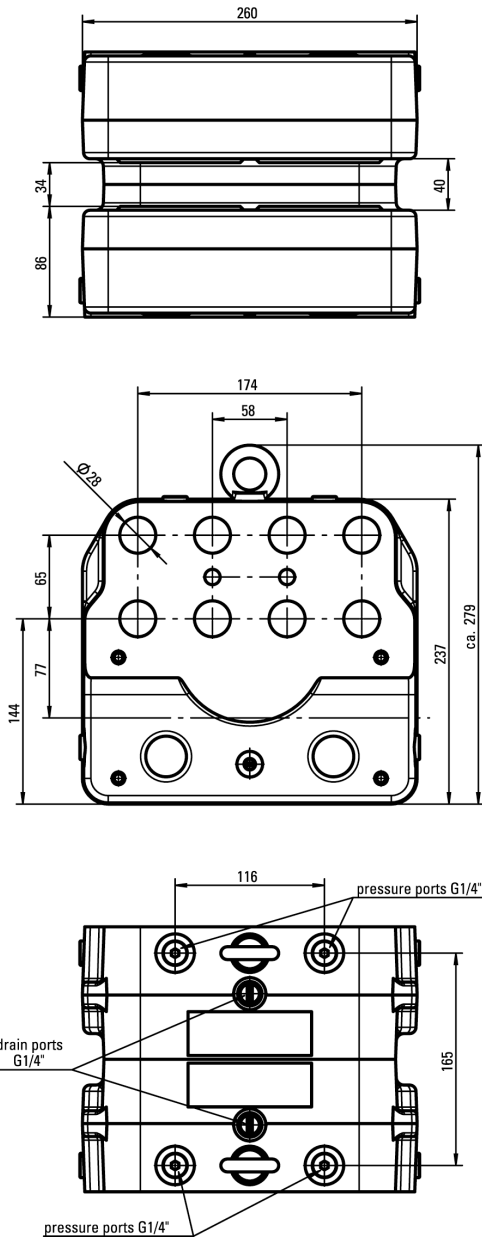
This includes the verification of the brake selection, if required. A detailed questionnaire is provided for this purpose. Installation and commissioning on site is possible by PINTSCH BUBENZER service engineers. Drawings as DWG/DXF files for your engineering department are available upon request.

Rotor brake (active) BACW 100

Dimensions and technical data



Rev. 05-12



$$\text{Brake torque } M_{Br} \text{ in Nm} = F_A \text{ (kN)} \times \mu \times d_1 \text{ (mm)}$$

- *) For lower temperatures please contact us
- **) Average friction factor of standard material combination, dependent of the operational conditions

All dimensions in mm
Alterations reserved without notice

Type BACW 100 rotor		
Contact Force F_A	kN	200
Max. Operating Pressure p	bar	160
Air gap (each side)	mm	3
Oil Volume - 1 mm Stroke	l	0.025
Piston Area (each side)	cm ²	127
Temperature Range*	°C	-40 to +70
Weight	kg	ca. 69

Brake Pad		
Pad Area (each side)	cm ²	197
Brake Pad Width	mm	108
Theor. Friction Coefficient **	μ	0,2... 0,3... 0,4

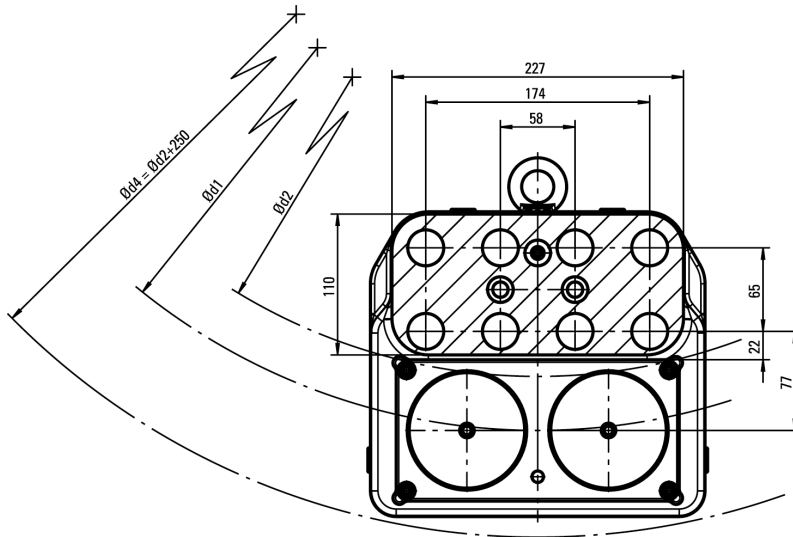
Brake Disc		
Disc Thickness (Standard)	mm	30

Rotor brake (active) BACW 100

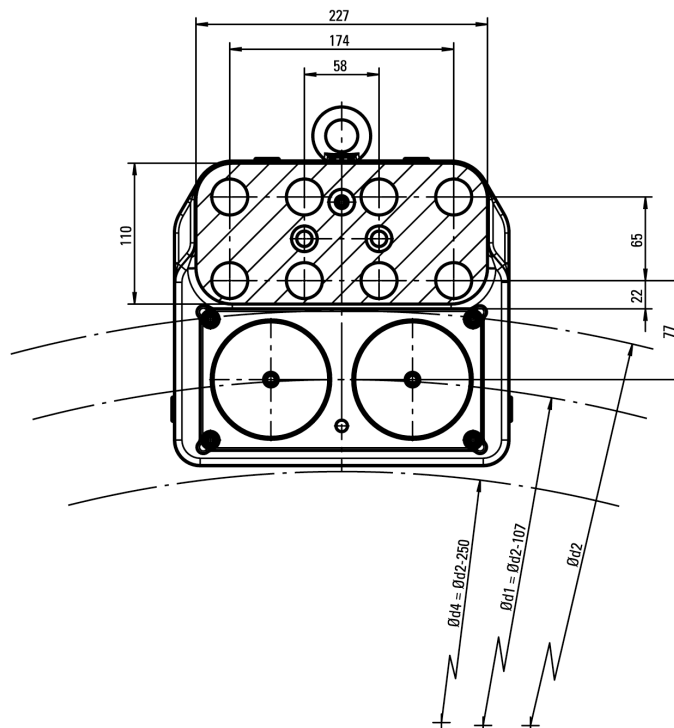
Dimensions and technical data



Rev. 05-12



Inside mounting	
$\varnothing d2$	$\varnothing d1$
900	984
1000	1087
1200	1290
1400	1493
1600	1695
1800	1897
2000	2099
>2200	$\varnothing d2 + 100$



Outside mounting
$\varnothing d2 = \text{min. } 700$

All dimensions in mm
Alterations reserved without notice